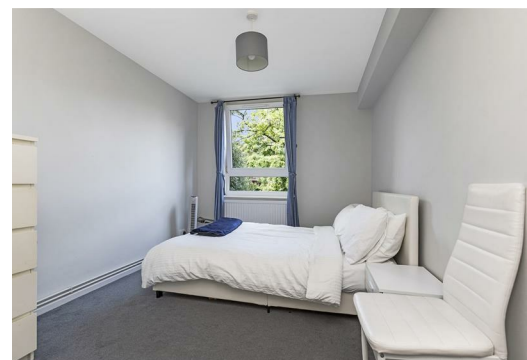


TATES

020 7602 6020

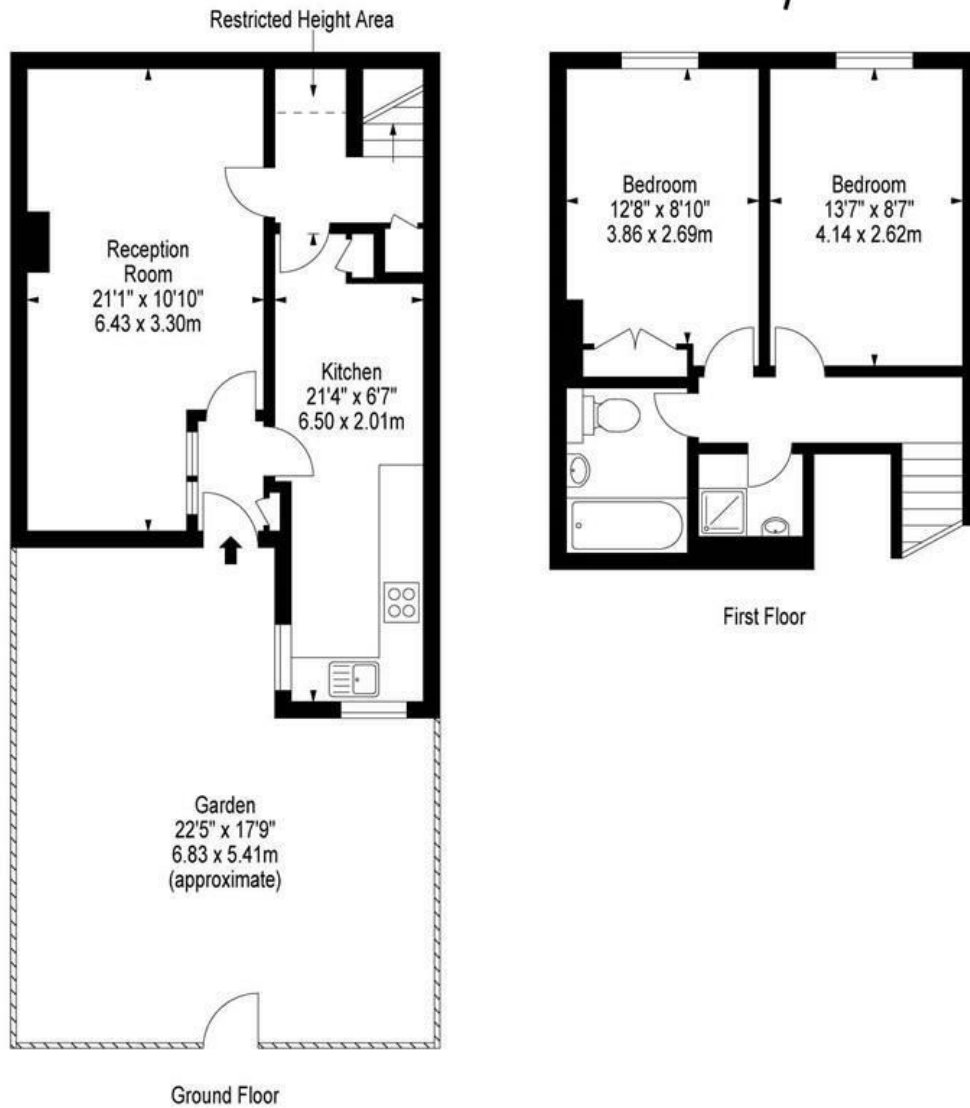


Lily Close, St Pauls Court, London W14 9YB

£3,000 Per month

- Two double bedrooms
- Gated development
- Available end August
- 24 hour security
- Council Tax Band E - Hammersmith & Fulham
- Two bathrooms
- Heating and hot water inclusive of rent
- Communal gardens
- Close to Barons Court Tube

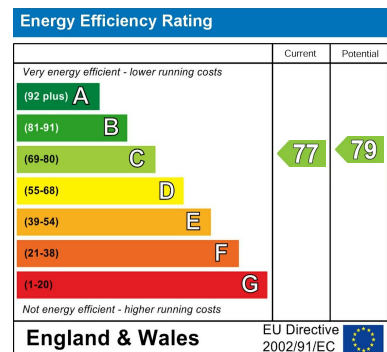
Lily Close, St. Pauls Court
London W14



Approx Gross Internal Area 793 Sq Ft - 73.67 Sq M

Floor Plan Supplied For Identification Purposes Only And May Not Be Accurate
Floor Plan by www.elegantmediasolution.com

Whilst these particulars are produced in good faith and are believed to be correct, no guarantee is given, nor any responsibility accepted, by Tates nor by any of its representatives, for their accuracy. The particulars do not constitute part of any offer or contract, and it is recommended that such things as measurements, condition, structure, services, appliances, fixtures and fittings and facilities are all independently assessed by the prospective purchaser or renter of the subject property prior to committing to any contract.



135 Hammersmith Road, West Kensington, London W14 0QL

mail@tatesestates.co.uk

tatesestates.co.uk

Tates (Agents) Ltd. Registered in England and Wales No. 02356337
Registered Office: Imperial House, 8 Keane Street, London WC2B 4AS

